

**HAWAI'I TEACHER STANDARDS BOARD
COMMITTEE WORK SESSIONS AND BUSINESS MEETING**

**FRIDAY, AUGUST 30, 2013
Dole Cannery Meeting Room 158**

MINUTES

PRESENT: Louise Cayetano
Terry Holck
Jonathan Kissida
Justin Mew
Edward Patrick
Felicia Villalobos
Lisa DeLong
Wray Jose
Arlene Lee-Williams for Don Horner
Kerry Tom for Kathryn Matayoshi
Noe Noe Tom
Barry Wurst

ABSENT: Beth Pateman for Donald Young Scott Parker

STAFF: Lynn Hammonds, Executive Director
Lorrin Toma, DPSA
Jill Agena, Secretary

OBSERVERS: Jing Xu, Hawaii Information Consortium

CALL TO ORDER:

Chairperson Holck called the meeting to order at 1:05 p.m.

APPROVAL OF MINUTES:

(Jose/Lee-Williams) The minutes of the June 14, 2013 meeting were approved as written.

TOPIC: **Executive Director's Report**
DISCUSSION: Executive Director Lynn Hammonds sent her report to the Board and highlighted:
 1. Meetings attended over the summer;
 2. Meeting with Senator Tokuda about procedures for appointing members to HTSB;
 3. Conference calls with DCCA about the MOA regarding professional fitness hearings;
 4. Working with HIC on outstanding including the Niihau Special permit and fee payment options;

5. Employment of substitute Personnel Specialist Clara Burrows. This position is currently advertised.

TOPIC: **Executive Session Minutes for June 14, 2013**
DISCUSSION: Chairperson Holck reported out that minutes were approved in executive session as written.

TOPIC: **Budget, Personnel and Strategic Planning Committee**
DISCUSSION: N.Tom reported that the Committee discussed and made no changes to the strategic plan.

TOPIC: **Legislative and By-Laws Committee**
DISCUSSION: Wurst reported that the Committee discussed and reviewed:

- Strategic plan – changes made to allow inclusion to monitor legislation related to the HTSB
- Feedback on proposed revisions to administrative rules - thank you to Noe Noe Tom for the extensive edits
- Niihau special license – simplify the criteria
- Issues discussed at the Beverly Williams workshop on background checks and investigative procedures
- Proposed a discussion at the February 2014 board meeting on current bills relating to HTSB

TOPIC: **Teacher Education Committee**
DISCUSSION: Mew for Pateman reported that the Committee discussed:

- Strategic plan – requested that Dean Donald Young provide more information on the teacher candidate guarantee
- NBI 13-04: State Approval of Kaho'iwai Educator Preparation Program – recommends approval; changed date on NBI from August 23 to August 30, 2013

TOPIC: **Teacher Standards Committee**
DISCUSSION: Jose reported that the Committee discussed the strategic plan and:

- Added the review of the code of ethics
- In the following year, revise code of ethics and code of conduct
- Presentation by Troy Hutchings

TOPIC: **Committee of the Whole**
DISCUSSION: Holck reported that the committee discussed:

- NBI 12-19 Rev.: Hawaii Teacher Standards Board Meeting Schedule 2013-14 – recommends approval
- NBI 12-38 Rev: Election of Officers for 2013-14 – recommends approval

- **NBI 12-43 Rev.: Strategic Plan Revision and Update for 2015-16 – recommends approval with revisions**
- **NBI 13-05: Approval of Mobile App for HTSB License - Lookup – recommends approval**

TESTIMONY, PETITION FROM THE PUBLIC: None.

ANNOUNCEMENTS:

1. **Welcomed new board members Lisa DeLong and Scott Parker. And also recognized returning member Jonathan Kissida.**
2. **Letter from Hawai'i Pacific University acknowledging the support they received from Executive Director Hammonds. She was a guest speaker at their internship seminars. The letter explained how grateful they were for Executive Director Hammonds' willingness and generosity in taking time from her busy schedule to come to their campus for two evening classes.**

NEW BUSINESS APPROVED: (See Attachments)

1. **NBI 12-19 Rev.: Hawaii Teacher Standards Board Meeting Schedule 2012-2013**
(Holck on behalf of the Committee of the Whole)
2. **NBI 12-38 Rev.: Election of Officers for 2013-2014**
(Holck on behalf of the Committee of the Whole)
3. **NBI 12-43 Rev.: Strategic Plan Revision and Update for 2015-2016**
(Holck on behalf of the Committee of the Whole)
4. **NBI 13-01: Affirmation of Hawaii Provisional Licenses, Standard Licenses, Advanced Licenses, Added Fields to Existing Licenses, Renewed Licenses, and Career and Technical Education Special Permits**
(Holck reported out approved in executive session)
5. **NBI 13-03: Evaluation of the Hawaii Teacher Standards Board Executive Director**
(Holck on behalf of the Committee of the Whole)
6. **NBI 13-04: State Approval of Teacher Education (SATE) Approval for Kaho'iwai Education Preparation Provider (EPP) Unit and Secondary Program**
(Pateman on behalf of the Teacher Education Committee)
7. **NBI 13-05: Approval of Mobile App for HTSB License Lookup**
(Holck on behalf of the Committee of the Whole)

MOTIONS:

1. (Cayetano/Wurst) Motion to amend the agenda to withdraw NBI 13-02: Request to Suspend the Rules.
2. (Cayetano/Jose) Motion to move into executive session to review license Ratification list for approval and executive session minutes for June 14, 2013.
3. (Cayetano/Villalobos) Motion to rise out of executive session.

ADJOURNMENT:

Chairperson Holck adjourned the meeting at 2:07 p.m.

RECORDER: 

Jill Agena

DATE: August 30, 2013

New Business Item 12-19

Introduced 1/25/13

Approved 1/25/13

Revised 8/30/13

Approved 8/30/13

TITLE: Hawaii Teacher Standards Board Meeting Schedule 2012-2013 2013-2014

The Hawaii Teacher Standards Board approves the following meeting schedule for 2012-2013:

Regularly Scheduled Meetings:

Date	Meeting
August 23 <u>30</u> , 2013	August Board Meeting
September 27, 2013	September Board Meeting
October 25 <u>18</u> , 2013	October Board Meeting
November 15, 2013	November Board Meeting
December 6, 2013	December Board Meeting
January 24, 2014	January Board Meeting
February 21, 2014	February Board Meeting
March 28, 2014	March Board Meeting
May 9, 2014	May Board Meeting
June 13, 2014	June Board Meeting

Tentative Neighbor Island Community Meetings:

October 10, 2013	Hilo Community Meeting
November 14 26 , 2013	Kauai Community Meeting
December 10, 2013	Lanai Community Meeting
February 13, 2014	Kona Community Meeting
March 6, 2014	Molokai Community Meeting
May 1, 2014	Maui Community Meeting

Submitted by: Terry Lynn Holck

Referred to: Committee of the Whole

New Business Item 12-38Rev

Introduced 5/17/13

Approved 5/17/13

Revised 8/30/13

Approved 8/30/13

TITLE: Election of Officers for 2013-2014

The Hawaii Teacher Standards Board approves the following officers and Committee Members for the 2013-2014 year:

Chairperson: Terry Holck

Vice Chairperson: Wray Jose

Legislative Committee Chairperson: Barry Wurst

Legislative Committee Vice Chairperson: Louise Cayetano

Committee Members:

Arlene Lee-Williams, Justin Mew, Beth Pateman, Jonathan Kissida, Scott Parker, Holck

Budget, Personnel and Strategic Planning Committee Chairperson: Noe Noe Tom

Budget, Personnel and Strategic Planning Committee Vice Chairperson: Felicia Villalobos

Committee Members:

Barry Wurst, Ed Patrick, Kerry Tom, Lisa DeLong, Holck

Teacher Standards Committee Chairperson: Wray Jose

Teacher Standards Committee Vice Chairperson: Kerry Tom

Committee Members:

Noe Noe Tom, Barry Wurst, Louise Cayetano, Jonathan Kissida, Scott Parker, Holck

Teacher Education Committee Chairperson: Beth Pateman

Teacher Education Committee Vice Chairperson: Justin Mew

Committee Members:

Wray Jose, Felicia Villalobos, Arlene Lee-Williams, Ed Patrick, Holck, Lisa DeLong

Submitted by: Terry Lynn Holck

Referred to: Committee of the Whole

New Business Item 12-43Rev

Introduced 6/14/13

Approved 6/14/13

Revised 8/30/13

Approved 8/30/13

TITLE: Strategic Plan Revision and Update for 2015-2016

The Hawaii Teacher Standards Board approves the attached revisions to the Strategic Plan and directs the Executive Director to prepare an updated document for the August 2013 meeting.

The HTSB approves the attached Strategic Plan revision.

Submitted by: Terry Lynn Holck

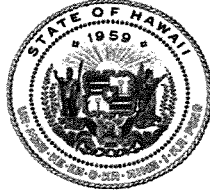
Referred to: Committee of the Whole



HAWAI'I TEACHER
STANDARDS BOARD

Strategic Plan

July 1, 2011 – June 30, 20156



**The Honorable Neil Abercrombie
Governor, State of Hawai'i**

Hawaii Teacher Standards Board

Terry Lynn Holck, Chairperson
Charter School Data Coach for the Nānākuli Wai'anae Zones of Innovation

Wray Jose, Vice Chairperson
Teacher (retired), Moanalua High School

Louise Cayetano
Teacher, Fern Elementary School

Lisa DeLong
Principal, Kailua Elementary School

Jonathan Kissida, Vice-Chairperson
Teacher, Hawai'i Academy of Arts and Science Public Charter School

Felicia Villalobos
Teacher, Wilcox Elementary School

Barry Wurst
Teacher, King Kamehameha III Elementary School

Arlene Lee-Williams, Designee
for Don Horner, Chairperson, Hawaii Board of Education

Kerry Tom, Designee
for Kathryn Matayoshi, Superintendent, Hawaii Department of Education

Justin Mew
Principal, Niu Valley Middle School

Scott Parker
Principal, Jefferson Elementary School

Dr. Beth Pateman, Designee
For Dr. Donald Young, Dean, College of Education, University of Hawaii-Manoa

Noe Noe Tom
Public Member

Edward Patrick
Public Member

Hawai'i Teacher Standards Board Professional Staff

Lynn Hammonds
Executive Director

Carolyn Gyuran
Educational Specialist

2011- 20156 Strategic Plan

Hawai`i Teacher Standards Board

Table of Contents

INTRODUCTION.....	11
OVERVIEW	11
GOAL 1: Support rigorous, progressive teacher preparation and licensure standards and policies.	12
GOAL 2: Enhance efficient customer service with Aloha.....	12
GOAL 3: Strengthen relationships with stakeholders.	13
GOAL 4: Develop operations which maximize effectiveness.	13
TIMELINE AND ASSIGNMENT FOR PLAN IMPLEMENTATION	14

INTRODUCTION

In 2009, the Hawai'i Teacher Standards Board was at the most important juncture in its history. Following a scathing report by the State Auditor in March of 2009, the Board took stock and began a valiant march forward. It started an intensive self-study that has resulted in strengthened operations, revised policy, and an emerging renewal of confidence and trust from teachers and the public. The Board has made significant progress in achieving four main goals:

- Support rigorous, progressive teacher preparation and licensure standards and policies.
- Enhance efficient customer service with Aloha.
- Strengthen relationships with stakeholders.
- Develop operations which maximize staff effectiveness.

This Strategic Plan will be used to provide a framework to guide the Board committees and Executive Director to accomplish these goals between July 1, 2011 and June 30, 2016.

OVERVIEW

History of HTSB

Act 240 of the Eighteenth Legislature, State of Hawaii, established the Hawaii Teacher Standards Board in 1995. The Board originally consisted of nine members, including four licensed teachers, three educational officers, the chairperson of the Board of Education, and the Dean of the University Of Hawaii College Of Education. That membership has been expanded to include two additional teachers and two members of the public. The HTSB has full responsibility for establishing teacher, school counselor and school librarian licensing standards, and issuing licenses to education professionals who meet the criteria. The Board issues three tiers of licenses and two kinds of special permits. The Board approves Hawaii based state approved teacher, counselor and librarian education programs (SATEP); reports to the federal government on licensing and teacher education programs; and approves, validates and adopts licensure tests. The Board also participates in efforts related to teacher quality, including support for National Board for Professional Teaching Standards (NBPTS) candidates. In addition, the Board establishes penalties for teacher misconduct that may result in the suspension or revocation of a license.

Vision and Mission

The HTSB envisions a highly esteemed public education system with rigorous professional teacher standards that foster student success. Our mission is to collaboratively set high teacher licensing and credentialing standards to:

- Provide every child with qualified teachers.
- Promote professionalism and teaching excellence.
- Build public confidence in the teaching profession.
- Provide more accountability to the public.

GOAL 1: Support rigorous, progressive teacher preparation and licensure standards and policies.

➤ Objectives

- Generate revised state standards that reflect rigor and current best practice based on review of new national teacher education and teacher performance standards.
- Organize and revise statute, administrative rules and policies so they are streamlined and user friendly.
- Evaluate Professional Fitness procedures to ensure public school keiki are protected.
- Revise existing licensure tests and additional options for validating content expertise.
- Revision of license renewal criteria and audit processes based on feedback after two years of implementation.
- Revision of provisional teacher preparation program approval process with enhanced training for reviewers and inclusion of out of state reviewers.

➤ Indicators

- Revised State Approval of Teacher Education Standards
- Revised Hawaii Teacher Performance Standards
- Revised HRS
- Revised Administrative rules
- Revised policies which align with statute and administrative rules
- Revised policies and procedures for investigation and evaluation of Professional Fitness files.
- Revised licensure tests and implementation of additional methods of validating content expertise.
- Revised SATEP Manual for provisional approval of new units and programs.

GOAL 2: Enhance efficient customer service with Aloha.

➤ Objectives

- Acknowledge telephone and email inquiries within two business days and resolve issues within five business days.
- Process incoming documents within two business days including notification of receipt.
- Improve percentage of customers marking service as “professional, friendly, and knowledgeable”.
- Development of Operations Handbook for HTSB staff for reference and to better meet needs of customers.

➤ Indicators

- Mantis call/email ticket tracking showing time to resolution
- Audit of mail log and online record tracking showing email notification of receipt of documents
- Tally of comment cards and implementation of online customer service survey

- HTSB Operations Handbook

GOAL 3: Strengthen relationships with stakeholders.

➤ Objectives

- Provide opportunities for teachers and teacher education faculty to give direct feedback to the Board to influence policy. (e.g., Work Groups, Standard Setting Panels, NBPTS candidate support)
- Utilize electronic media to effectively publicize HTSB information to teachers.
- Increase and sustain regular communication with the Legislative Education Committees, the Department of Education, Hawaii State Teacher's Association, state approved teacher education programs.
- Comprehensive survey of applicants and licensees at three year mark of Strategic Plan for feedback on successes and areas for improvement.

➤ Indicators

- Number of teachers and teacher educators serving on work groups, panels and as NBPTS support providers
- Record of memorandum, newsletters, reports, New Business Items, Executive Director reports posted on website
- Record of contacts with stakeholders showing increase over time
- Survey results and analysis of data for program improvements.

GOAL 4: Develop operations which maximize effectiveness.

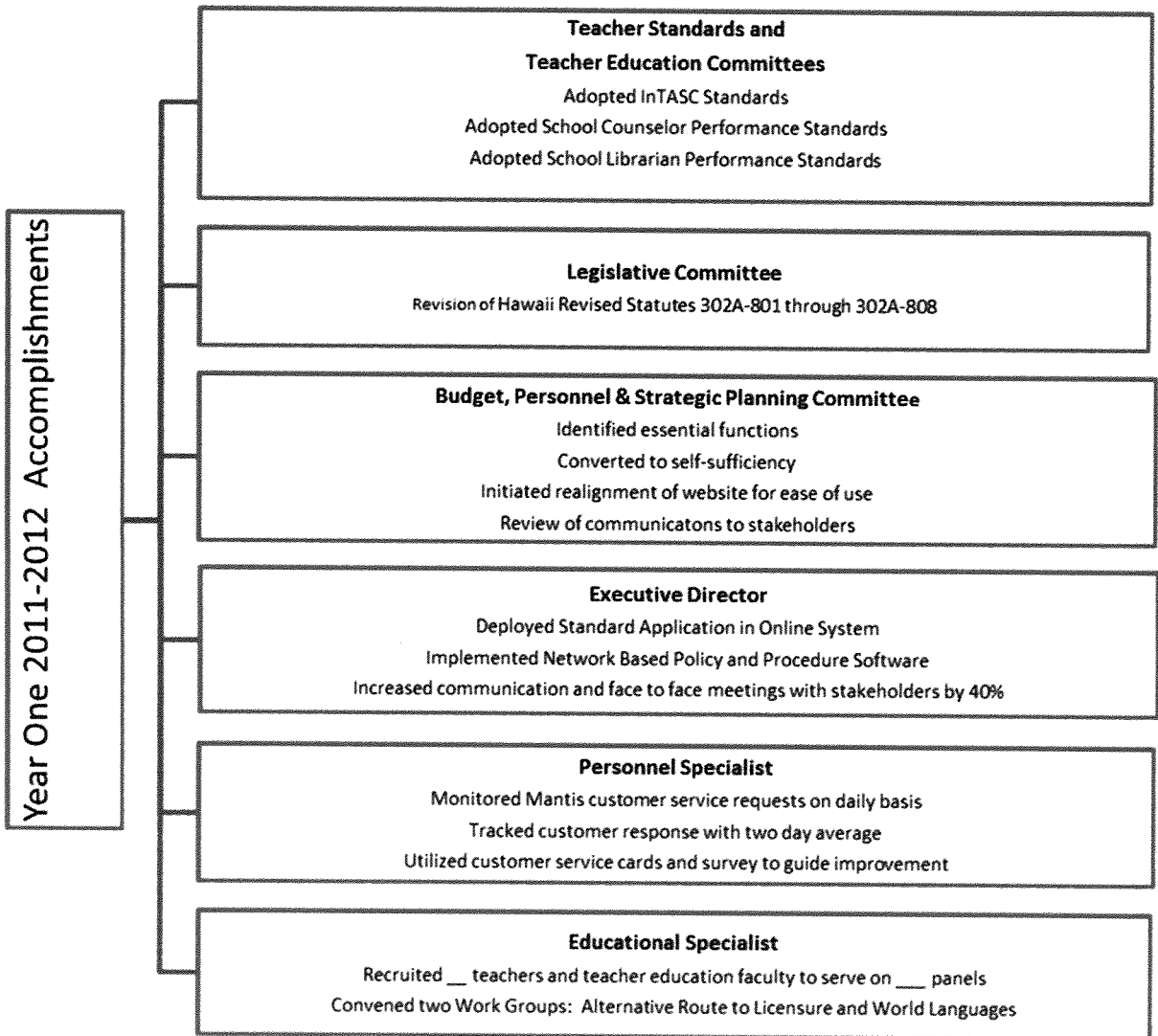
➤ Objectives

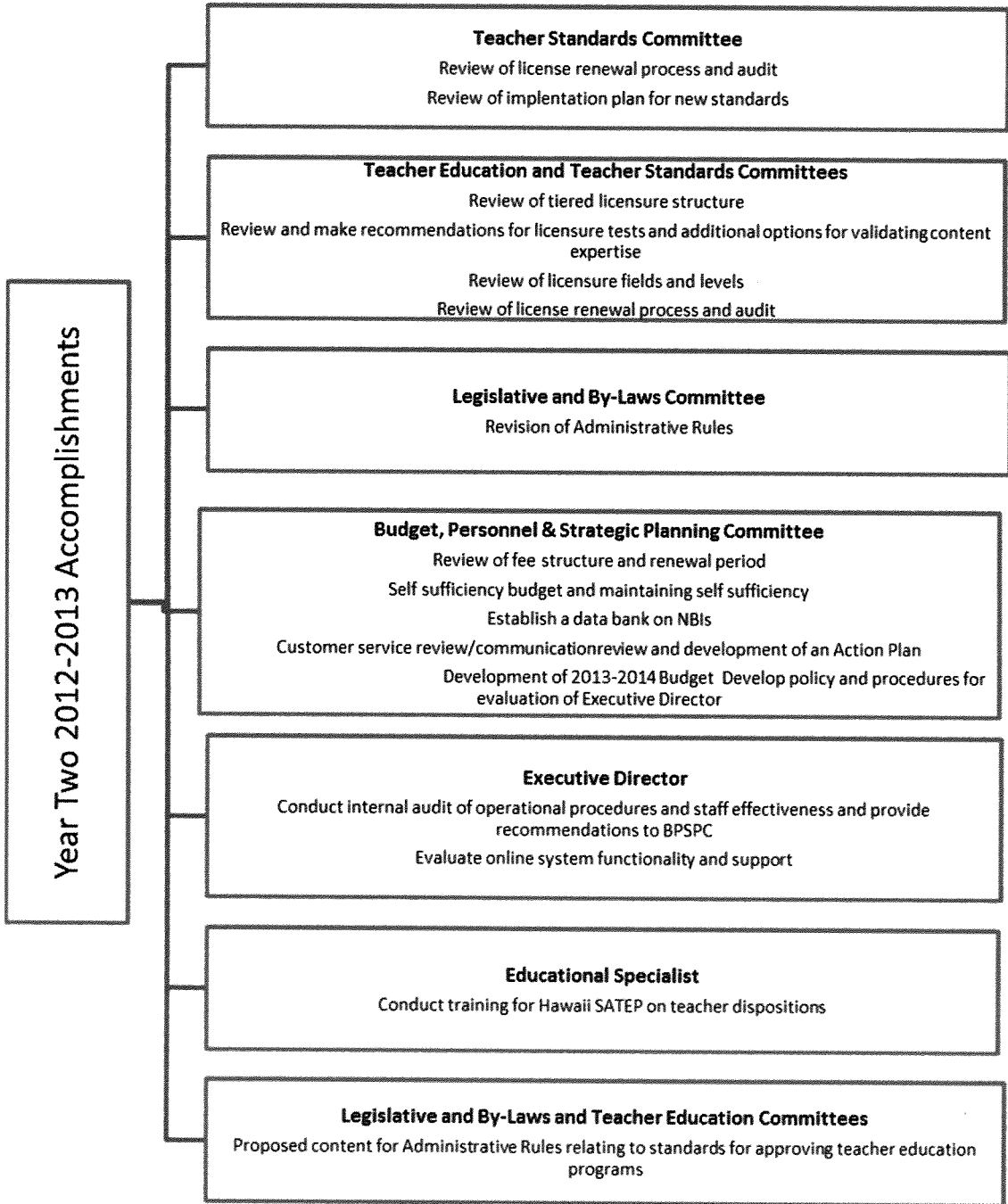
- Deploy remaining phases in online system and monitor for usability and value.
- Interface with other organizations to work toward data interface.
- Review of essential and non-essential functions.
- Conduct internal audit of operational procedures and staff effectiveness.
- Deploy policy and procedure manual on networked server to expedite communication among staff and to ensure policies are consistently and appropriately implemented.
- Review license fee structure and budget requirements to enable HTSB to become self-sufficient based on license fees.

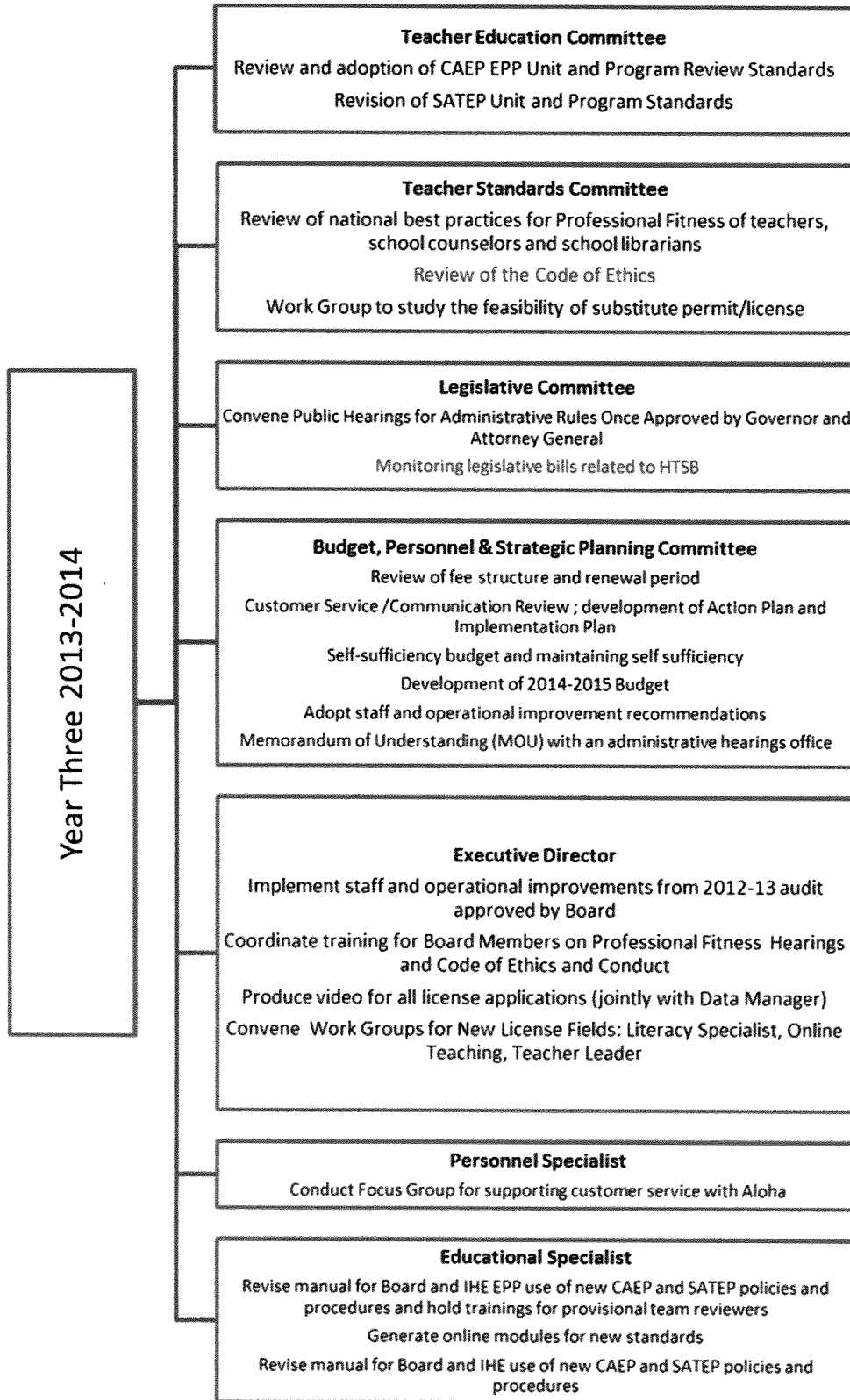
➤ Indicators

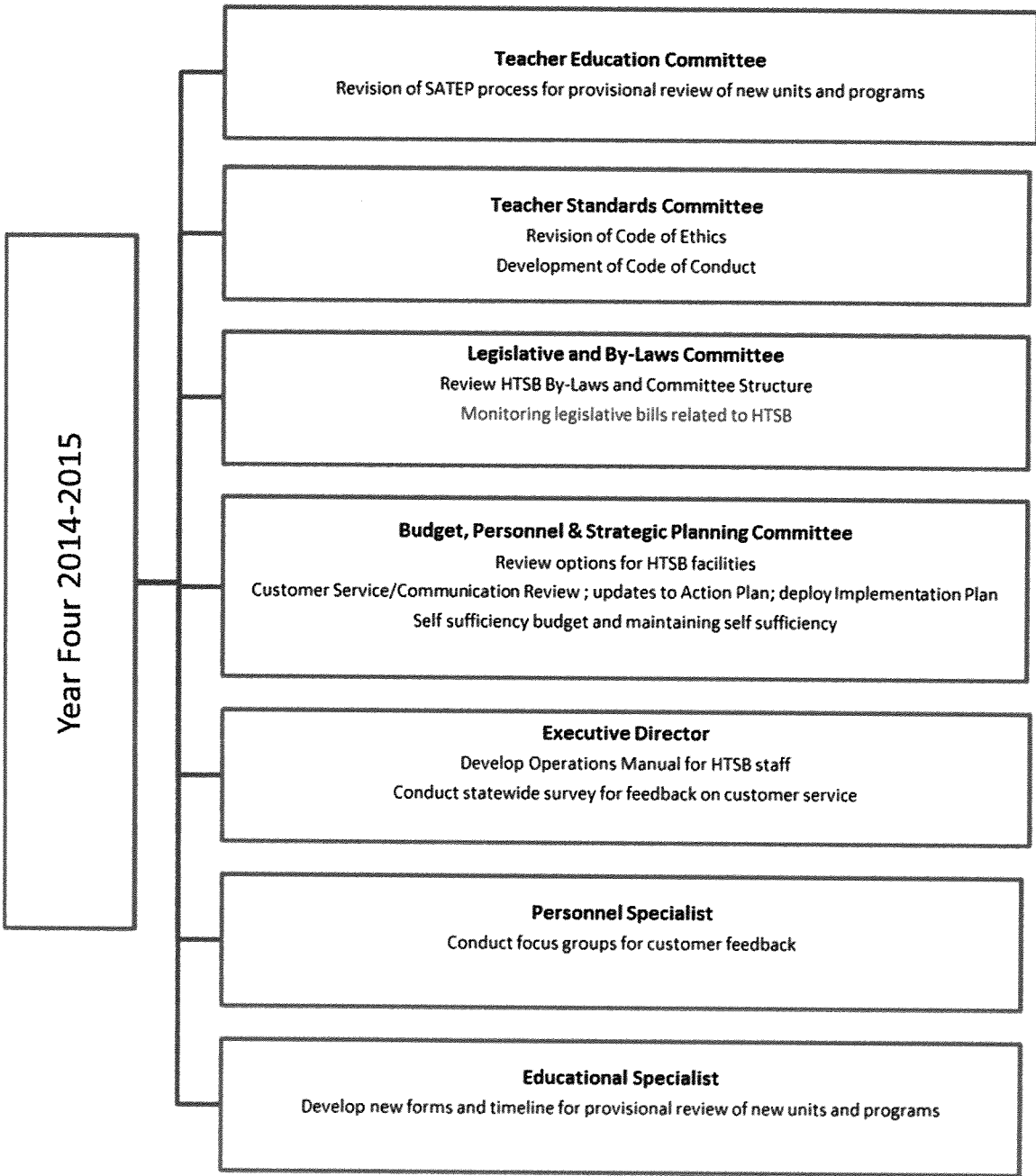
- Quarterly report to Board on status on online system phase deployments
- Participation in data warehouse or interface among P-20 stakeholders and SATEP
- Termination of non-essential functions
- Report of audit on operations, procedures and staffing
- Posted policies, staff meeting agendas, memos, emails on policy/procedure program
- Revised fee structure which fully funds HTSB operations

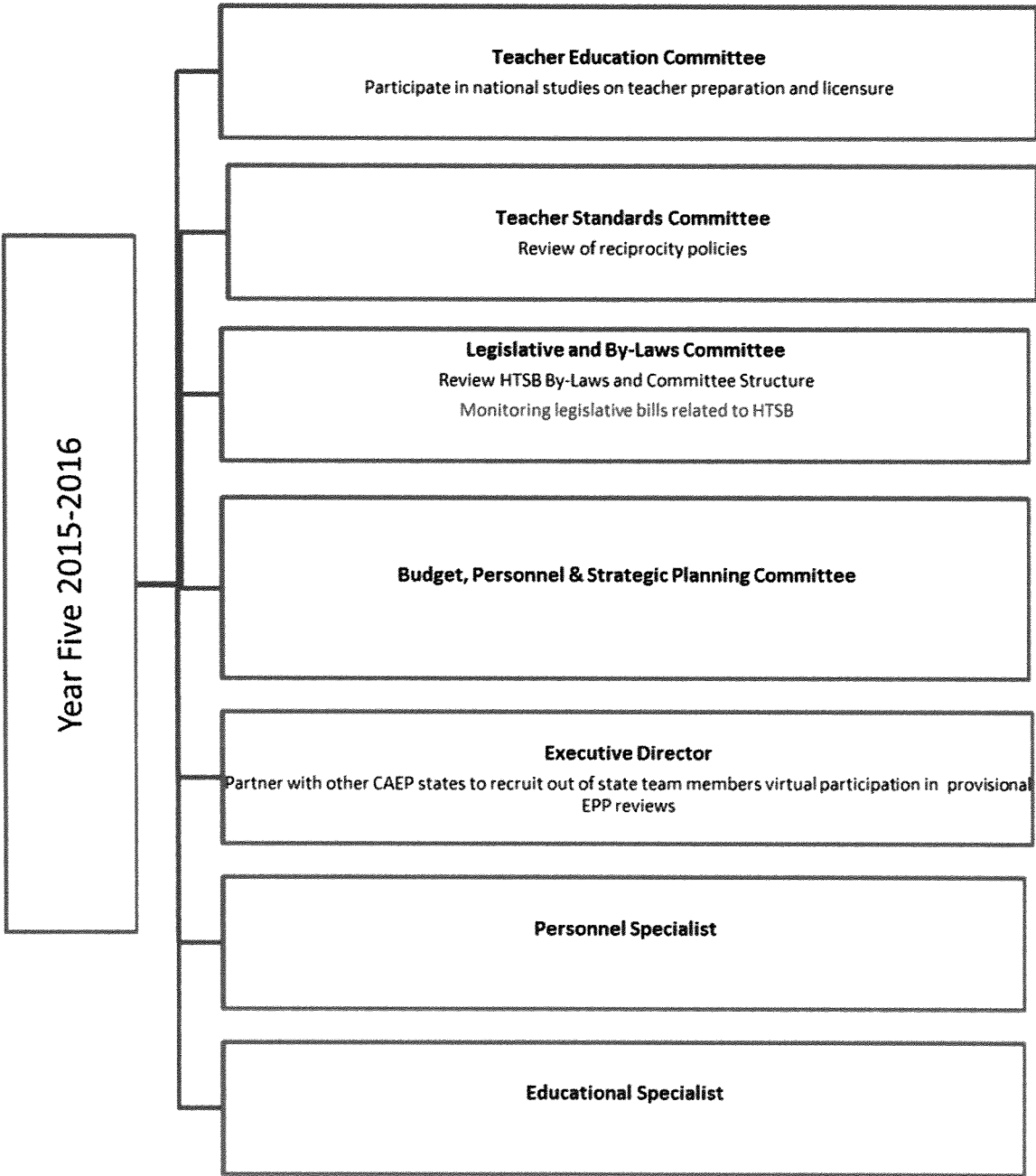
TIMELINE AND ASSIGNMENT FOR PLAN IMPLEMENTATION











New Business Item 13-01

Introduced 08/30/13

Approved 08/30/13

TITLE: Affirmation of Hawaii Provisional Licenses, Standard Licenses, Advanced Licenses, Added Fields to Existing Licenses, Renewed Licenses, and Career and Technical Education Special Permits

The Hawaii Teacher Standards Board affirms the attached list of Hawaii Provisional Licenses, Standard Licenses, Advanced Licenses, Added Fields to Existing Licenses, Renewed Licenses, and Career and Technical Education Special Permits.

Submitted by: Terry Lynn Holck

Referred to:

**August 2013
License List**

Advance License

Type	Last Name	First Name	Teaching Fields	Effective Date	Expiration Date
AL	Ida	Michael	Mathematics 7 - 12	6/1/2013	6/30/2023
AL	Kalchik	William	Elementary Education K-6	7/1/2013	6/30/2023
AL	Locke	Judy	Elementary Education K - 6 Reading K - 6	7/1/2013	6/30/2023
AL	Marshall	Andrea	Physical Education K - 12	6/1/2013	6/30/2023
AL	Mattli	Sandra	Elementary Education K - 6 Social Studies 5 - 9 Special Education K - 12	8/1/2013	6/30/2024
AL	Mexico-Frazier	Scott	Reading 7 - 12 Science 7 - 12 Special Education K - 12 Teaching English to Speakers of Other Languages 7 - 12	7/1/2013	6/30/2023
AL	Pryor	Charlene	Elementary Education K - 6 Special Education K - 12	6/1/2013	6/30/2023
AL	Ssemanda	Levi	Special Education K - 12	6/1/2013	6/30/2023
AL	Sumida	Sheriann	Elementary Education K - 6 Special Education K - 12	6/1/2013	6/30/2023
AL	Yoshida	Cheryl	Elementary Education K - 6	8/1/2013	6/30/2024

Standard License

Type	Last Name	First Name	Teaching Fields	Effective Date	Expiration Date
SL	Addison	Jasmine	Mathematics 7 - 12	8/1/2013	6/30/2019
SL	Ade-Salu	Raimi	Elementary Education K - 6	7/1/2013	6/30/2018
SL	Aguda	Maria Albesie	Elementary Education K - 6	8/1/2013	6/30/2019
SL	Akama	Breanna	School Counselor 7 - 12	7/1/2013	6/30/2018
SL	Akiyama	Alyssa-Marie	Elementary Education K - 6	7/1/2013	6/30/2018
SL	Alcain	Brynn	Elementary Education K - 6	6/1/2013	6/30/2018
SL	Allen	Pacita	Elementary Education K - 6	8/1/2013	6/30/2019
SL	Anders	Michelle	Special Education K - 12	6/1/2013	6/30/2018
	Aoki	Paul	SPED - Mild/Moderate K - 12	6/1/2013	6/30/2018
SL	Arakaki	Allison	School Counselor K - 12	7/1/2013	6/30/2018
SL	Arcangel	Teresa	SPED - Mild/Moderate K - 12	6/1/2013	6/30/2018
SL	Argueta	Kevin	Elementary Education K - 6	7/1/2013	6/30/2018
SL	Arndt	Alicia	Special Education K - 12	6/1/2013	6/30/2018
SL	Arnold	Rachael	Elementary Education K - 6 Reading K - 6 Teaching English to Speakers	8/1/2013	6/30/2019

			of Other Languages K - 6		
SL	Arrayan	Curtis	SPED - Mild/Moderate K - 12	7/1/2013	6/30/2018
SL	Atonio-Figueroa	Akenese	SPED - Mild/Moderate K - 12	6/1/2013	6/30/2018
SL	Augustin	Dawn	Elementary Education K - 6	6/1/2013	6/30/2018
SL	Awana	Bethany	Elementary Education K - 6	8/1/2013	6/30/2019
SL	Bahrdunn	Nicholas	Elementary Education K - 6	6/1/2013	6/30/2018
SL	Bailey	Lindsey	Elementary Education K - 6	7/1/2013	6/30/2018
SL	Baker	Craig	Science 5 - 9 Science 7 - 12	6/1/2013	6/30/2018
SL	Ballinger	Alexis	Elementary Education K - 6	7/1/2013	6/30/2018
SL	Banninger	Paige	Elementary Education K - 6	8/1/2013	6/30/2019
SL	Barcarse	Tierney	SPED - Mild/Moderate K - 12	6/1/2013	6/30/2018
SL	Barrett	Sherri-Ann	Science 7 - 12	7/1/2013	6/30/2018
SL	Bass	Jennifer	School Librarian K - 12	7/1/2013	6/30/2018
SL	Belluche	Mia	Elementary Education K - 6	7/1/2013	6/30/2018
SL	Benson	Gretchen	Elementary Education K - 6	6/1/2013	6/30/2018
SL	Bento	Tori	Elementary Education K - 6	7/1/2013	6/30/2018
SL	Bermudes	Maricelle	Elementary Education K - 6	6/1/2013	6/30/2018
SL	Bethel	Ralph	Special Education K - 12	6/1/2013	6/30/2018
SL	Blondin	Hayley	English 7 - 12 Teaching English to Speakers of Other Languages K - 12	6/1/2013	6/30/2018
SL	Boccafogli	Thomas	Elementary Education K - 6	7/1/2013	6/30/2018
SL	Bolin	Maureen	Elementary Education K - 6 Mathematics 5 - 9	6/1/2013	6/30/2018
SL	Bonilla	Rachel	Mathematics 7 - 12	6/1/2013	6/30/2018
SL	Bowen	Chelsea	SPED - Mild/Moderate K - 12	6/1/2013	6/30/2018
SL	Boyce	Devetta	Elementary Education K - 6	6/1/2013	6/30/2018
SL	Breen	Maura	Elementary Education K - 6	6/1/2013	6/30/2018
SL	Brennan	Julia	Elementary Education K - 6	6/1/2013	6/30/2018
SL	Brown	Kevin	SPED - Severe/Profound K - 6	7/1/2013	6/30/2018
SL	Brown	Rikki	Elementary Education K - 6	6/1/2013	6/30/2018
SL	Brown	Sala	Elementary Education K - 6	6/1/2013	6/30/2018
SL	Buffington	Gwendolyn	Mathematics 5 - 9 Science 5 - 9	7/1/2013	6/30/2018
SL	Bui	Crystal	English 7 - 12	7/1/2013	6/30/2018
SL	Burns	Tara	Special Education K - 12 Special Education PK - 3	6/1/2013	6/30/2018
SL	Bush	Mary	SPED - Mild/Moderate K - 12 SPED - Mild/Moderate PK - 3 SPED - Severe/Profound K - 12 SPED - Severe/Profound PK - 3	6/1/2013	6/30/2018
SL	Cabrera	Anthony	Social Studies 7 - 12	6/1/2013	6/30/2018

SL	Calef	Anne	Elementary Education K - 6	7/1/2013	6/30/2018
SL	Calleson	Anna	Elementary Education K - 6 Social Studies 5 - 9 Social Studies 7 - 12	7/1/2013	6/30/2018
SL	Camarillo	Rama	Elementary Education K - 6 Special Education K - 6	7/1/2013	6/30/2018
SL	Camarillo	Davin	Music K - 12	6/1/2013	6/30/2018
SL	Cantor	Anna	Science 7 - 12	7/1/2013	6/30/2018
SL	Caoili	Stephanie	Elementary Education K - 6 Special Education PK - 3	6/1/2013	6/30/2018
SL	Carlisle	Kalie	Health K - 12 Physical Education K - 12	8/1/2013	6/30/2019
SL	Carlos	Fedelina	Social Studies 7 - 12	7/1/2013	6/30/2018
SL	Carlson	Cherese	SPED - Severe/Profound 7 - 12	6/1/2013	6/30/2018
SL	Carson	Susan	German 7 - 12 Social Studies 7 - 12	6/1/2013	6/30/2018
SL	Carvalho	Brittney	Elementary Education K - 6	6/1/2013	6/30/2018
SL	Carvalho	Sheldon	Mathematics 7 - 12 School Counselor K - 12	8/1/2013	6/30/2019
SL	Casillo	Allison	Elementary Education K - 6	6/1/2013	6/30/2018
SL	Cassidy	Lisa	Elementary Education K - 6	6/1/2013	6/30/2018
SL	Castelaneli	Mary	Mathematics 7 - 12	6/1/2013	6/30/2018
SL	Castro	Roberto	Science 7 - 12	7/1/2013	6/30/2018
SL	Chang	Julie	Elementary Education K - 6	6/1/2013	6/30/2018
SL	Cheng	Judy	Early Childhood Education PK - 3 Elementary Education K - 6	7/1/2013	6/30/2018
SL	Chong	Charles	English 7 - 12 Science 7 - 12	7/1/2013	6/30/2018
SL	Chouinard	Johnathan	Special Education K - 6	7/1/2013	6/30/2018
SL	Chun	Dwayne	Elementary Education K - 6	6/1/2013	6/30/2018
SL	Clements	Nicholas	Mathematics 7 - 12	7/1/2013	6/30/2018
SL	Coates	Caroline	Mathematics 7 - 12	7/1/2013	6/30/2018
SL	Coffman	Ashlie	Elementary Education K - 6 Special Education K - 6	7/1/2013	6/30/2018
SL	Cogswell	Barry	English 7 - 12	7/1/2013	6/30/2018
SL	Coleman	Julia	Social Studies 5 - 9 Social Studies 7 - 12	7/1/2013	6/30/2018
SL	Coles	Renuka	Elementary Education K - 6	6/1/2013	6/30/2018
SL	Conde	Amanda	Early Childhood Education PK - 3 Elementary Education K - 6	6/1/2013	6/30/2018
SL	Connolly	Elizabeth	Elementary Education K - 6	6/1/2013	6/30/2018
SL	Connolly	Deborah	Early Childhood Education PK - 3 Elementary Education K - 6	6/1/2013	6/30/2018
SL	Coogan	Renee	Mathematics 7 - 12	6/1/2013	6/30/2018
SL	Copple	Brent	Elementary Education K - 6	7/1/2013	6/30/2018

SL	Corpuz	Angela	Elementary Education K - 6	6/1/2013	6/30/2018
SL	Cox	Susan	Elementary Education K - 6	7/1/2013	6/30/2018
SL	Cramm	Keri	Elementary Education K - 6	6/1/2013	6/30/2018
SL	Cristal	Marko	Social Studies 7 - 12	7/1/2013	6/30/2018
SL	Crittenden	Zachary	Art K - 12	6/1/2013	6/30/2018
SL	Daley	Chelsea	Elementary Education K - 6	7/1/2013	6/30/2018
SL	Dao	Linh	Elementary Education K - 6	6/1/2013	6/30/2018
SL	Darr	Erika	Elementary Education K - 6	7/1/2013	6/30/2018
SL	Davis	Patricia	Early Childhood Education PK - 3 Elementary Education K - 6 English 5 - 9 School Counselor K - 12 Social Studies 5 - 9	7/1/2013	6/30/2018
SL	De los Rios	Amelia	Spanish 7 - 12	7/1/2013	6/30/2018
SL	DeFazio	Bridget	French K - 12 Spanish K - 12	6/1/2013	6/30/2018
SL	DeForest	Carol	SPED - Mild/Moderate K - 12	6/1/2013	6/30/2018
SL	DeGregorio	Lia	Elementary Education K - 6 Special Education K - 6	7/1/2013	6/30/2018
SL	Dela Cuadra	Jasen	Mathematics 5 - 9	7/1/2013	6/30/2018
SL	Della	Denise	Elementary Education K - 6	7/1/2013	6/30/2018
SL	DePoe	Violet	Elementary Education K - 6	7/1/2013	6/30/2018
SL	DePondichello	MaryLou	SPED - Mild/Moderate K - 12	7/1/2013	6/30/2018
SL	Derning	Allyson	Physical Education K - 12	7/1/2013	6/30/2018
SL	Deskin	Erin	Elementary Education K - 6	7/1/2013	6/30/2018
SL	DeSoto-McCollough	Laura	School Counselor 7 - 12	7/1/2013	6/30/2018
SL	Diaz	Jacqueline	Special Education K - 12	7/1/2013	6/30/2018
SL	Diaz-Huth	Monet	Social Studies 7 - 12	8/1/2013	6/30/2019
SL	Dingemans	Jamie	Early Childhood Education PK - 3	7/1/2013	6/30/2018
SL	Dinius	Julie	Social Studies 7 - 12	8/1/2013	6/30/2019
SL	Dobbins	Kamryn	English 7 - 12	7/1/2013	6/30/2018
SL	Domingo	Glemarie	Physical Education 7 - 12	7/1/2013	6/30/2018
SL	Dong	Tricia	Mathematics 7 - 12	7/1/2013	6/30/2018
SL	Donovan	Alexa	Elementary Education K - 6	6/1/2013	6/30/2018
SL	Doolittle	Jacob	Social Studies 5 - 9 Social Studies 7 - 12	8/1/2013	6/30/2019
SL	Dossetto	Brittany	Elementary Education K - 6	7/1/2013	6/30/2018
SL	Dragovich	Leah	Early Childhood Education PK - 3	6/1/2013	6/30/2018

			Special Education K - 6		
SL	Dreyfuss	Adam	English 7 - 12	7/1/2013	6/30/2018
SL	Dunn	Tracy	Social Studies 7 - 12	8/1/2013	6/30/2019
SL	Elder	Danielle	Mathematics 7 - 12	7/1/2013	6/30/2018
SL	Elzer	Robert	Mathematics 7 - 12	6/1/2013	6/30/2018
SL	Emerson	Daniel	Health K - 12 Physical Education K - 12	7/1/2013	6/30/2018
SL	Emwalu	Lisa Emma	Elementary Education K - 6	6/1/2013	6/30/2018
SL	English-Somerville	Janice	Elementary Education K - 6 Science 7 - 12	6/1/2013	6/30/2018
SL	Enriquez	Sherry	Elementary Education K - 6 Mathematics 5 - 9	7/1/2013	6/30/2018
SL	Esera	Nadia	Elementary Education K - 6	6/1/2013	6/30/2018
SL	Evangelista	Bernaldo	Music 7 - 12	7/1/2013	6/30/2018
SL	Faumui	Suitupe	CTE-Public and Human Services 7-12	6/1/2013	6/30/2018
SL	Fennell	Lorie	Mathematics 5 - 9 SPED - Mild/Moderate K - 12 SPED - Mild/Moderate PK - 3	6/1/2013	6/30/2018
SL	Fields	Garret	English 7 - 12	6/1/2013	6/30/2018
SL	Finesilver	Katharine	Elementary Education K - 6 Special Education K - 12	7/1/2013	6/30/2018
SL	Fisher	Kelli	Elementary Education K - 6	7/1/2013	6/30/2018
SL	Fitch	Mason	Social Studies 7 - 12	7/1/2013	6/30/2018
SL	Foley	Kelly	Social Studies 5 - 9 Social Studies 7 - 12	8/1/2013	6/30/2019
SL	Fong	JoAnna	English 7 - 12	7/1/2013	6/30/2018
SL	Fontes	Chelsey	Elementary Education K - 6	6/1/2013	6/30/2018
SL	Forte	Jordan	Elementary Education K - 6	7/1/2013	6/30/2018
SL	Fowler	Lyndsay	Elementary Education K - 6	7/1/2013	6/30/2018
SL	Francisco	Kaimahina	Elementary Education K - 6	6/1/2013	6/30/2018
SL	Fujimoto	Nicole	Elementary Education K - 6	6/1/2013	6/30/2018
SL	Fukuhara	Shayna	Early Childhood Education PK - 3 Elementary Education K - 6	6/1/2013	6/30/2018
SL	Furumoto	Wesley	Elementary Education K - 6	7/1/2013	6/30/2018
SL	Gagarin	Aiko	Elementary Education K - 6	6/1/2013	6/30/2018
SL	Gaison	Samuel	Hawaiian Language Immersion K - 6	6/1/2013	6/30/2018
SL	Gajelonia	Gizelle	Elementary Education K - 6 SPED - Mild/Moderate K - 6	7/1/2013	6/30/2018
SL	Gallagher	Denise	Elementary Education K - 6 Special Education K - 6	7/1/2013	6/30/2018
SL	Gallego	Alyssa	English 7 - 12	7/1/2013	6/30/2018
SL	Gandoali	Suzanne	Elementary Education K - 6	6/1/2013	6/30/2018

SL	Garcia	Julie Brenda	Elementary Education K - 6	6/1/2013	6/30/2018
SL	Garcia Fernandez	Susana	Elementary Education K - 6	7/1/2013	6/30/2018
SL	Gates	Sheree	English 5 - 9 School Counselor K - 12 Social Studies 5 - 9	6/1/2013	6/30/2018
SL	Gates	Gregory	Mathematics 7 - 12	8/1/2013	6/30/2019
SL	George	Jane	English 7 - 12 Teaching English to Speakers of Other Languages K - 12 Teaching English to Speakers of Other Languages PK - 3	7/1/2013	6/30/2018
SL	Gerron	Elizabeth	Elementary Education K - 6	6/1/2013	6/30/2018
SL	Gibboni	Michaela	Elementary Education K - 6	7/1/2013	6/30/2018
SL	Gibson	Janny	Early Childhood Education PK - 3 Elementary Education K - 6	6/1/2013	6/30/2018
SL	Gigler	Kalen	Elementary Education K - 6 English 7 - 12 Mathematics 7 - 12 Reading K - 12	7/1/2013	6/30/2018
SL	Gilbert	Carlie	Elementary Education K - 6	8/1/2013	6/30/2019
SL	Glaser	Peter	Science 5 - 9 Science 7 - 12	6/1/2013	6/30/2018
SL	Gleason	Hallie	Social Studies 5 - 9 Social Studies 7 - 12 Spanish 7 - 12 Teaching English to Speakers of Other Languages 5 - 9 Teaching English to Speakers of Other Languages 7 - 12	7/1/2013	6/30/2018
SL	Goergen	Chelse	Elementary Education K - 6	6/1/2013	6/30/2018
SL	Gosiaco	Dominique	Elementary Education K - 6 Special Education K - 6	6/1/2013	6/30/2018
SL	Grass	Gary	Elementary Education K - 6	6/1/2013	6/30/2018
SL	Greene	Dorese	Elementary Education K - 6 Mathematics 7 - 12	7/1/2013	6/30/2018
SL	Guittap	Evangelyn	CTE-Public and Human Services 7-12 SPED - Mild/Moderate K - 12	8/1/2013	6/30/2019
SL	Hagihara	Deborah	SPED - Mild/Moderate 7 - 12	6/1/2013	6/30/2018
SL	Hall	Richard	Special Education K - 12	6/1/2013	6/30/2018
SL	Hall	Anisha	Teaching English to Speakers of Other Languages K - 12	6/1/2013	6/30/2018
SL	Hamilton	John	English 7 - 12 Special Education 5 - 9	6/1/2013	6/30/2018
SL	Hanagami	Blaise	CTE-Industrial and Engineering Technology 7-12	6/1/2013	6/30/2018
SL	Hara	Krislyn	School Counselor K - 12	7/1/2013	6/30/2018
SL	Harris	David	Elementary Education K - 6	7/1/2013	6/30/2018
SL	Hartley	Philip	Elementary Education K - 6	6/1/2013	6/30/2018
SL	Hartman	Kyle	Elementary Education K - 6	7/1/2013	6/30/2018
SL	Hayama	Stephanie	Elementary Education K - 6	6/1/2013	6/30/2018

SL	Hebein	Jennifer	Mathematics 7 - 12	7/1/2013	6/30/2018
SL	Heider	Danielle	English 7 - 12	7/1/2013	6/30/2018
SL	Higa	Kaycee	Elementary Education K - 6	7/1/2013	6/30/2018
SL	Higa	Andrew	School Counselor K - 12	6/1/2013	6/30/2018
SL	Hilley	John	Elementary Education K - 6	6/1/2013	6/30/2018
SL	Hinden	Curtiss	CTE-Industrial and Engineering Technology 7-12	6/1/2013	6/30/2018
SL	Hipp	Shea	Mathematics 7 - 12	6/1/2013	6/30/2018
SL	Hirota	Jonathan	Elementary Education K - 6	6/1/2013	6/30/2018
SL	Ho	Kathryn	Elementary Education K - 6	6/1/2013	6/30/2018
SL	Hokoana	Kenton	Elementary Education K - 6	6/1/2013	6/30/2018
SL	Holder	Joseph	Early Childhood Education PK - 3	6/1/2013	6/30/2018
SL	Holomalia	Lauren	Elementary Education K - 6	7/1/2013	6/30/2018
SL	Horikami	Alisha Ann	Elementary Education K - 6 Mathematics 5 - 9	7/1/2013	6/30/2018
SL	Horn	Leisa	Elementary Education K - 6	7/1/2013	6/30/2018
SL	Howanic	Elizabeth	Elementary Education K - 6	7/1/2013	6/30/2018
SL	Hutchens	Sean	Social Studies 7 - 12	6/1/2013	6/30/2018
SL	Iha	Alysa	English 7 - 12	7/1/2013	6/30/2018
SL	Ikeda	Shariann	SPED - Mild/Moderate K - 12	7/1/2013	6/30/2018
SL	Ikeda	Leilani	Elementary Education K - 6	6/1/2013	6/30/2018
SL	Ikehara	Mykenna	Elementary Education K - 6 Special Education K - 6	7/1/2013	6/30/2018
SL	Ing	Brandon	Mathematics 7 - 12	7/1/2013	6/30/2018
SL	Inglis	Sandra	Elementary Education K - 6 SPED - Mild/Moderate K - 6	7/1/2013	6/30/2018
SL	Iseke	Dawn	Elementary Education K - 6	7/1/2013	6/30/2018
SL	Ishida	Rachel	Early Childhood Education PK - 3 Elementary Education K - 6	7/1/2013	6/30/2018
SL	Ishida	Anya	School Counselor K - 12	7/1/2013	6/30/2018
SL	Ishihara	Alexis	Elementary Education K - 6	7/1/2013	6/30/2018
SL	Isobe	Kryssa	Elementary Education K - 6	7/1/2013	6/30/2018
SL	Ives	Darya	Mathematics 7 - 12	7/1/2013	6/30/2018
SL	Iwasaki	Marie	Art 7 - 12	6/1/2013	6/30/2018
SL	Iwase	Sheree	School Counselor K - 12	7/1/2013	6/30/2018
SL	Jacinto	Cassie-Ann	Mathematics 5 - 9 Mathematics 7 - 12 Teaching English to Speakers of Other Languages 5 - 9 Teaching English to Speakers of Other Languages 7 - 12	7/1/2013	6/30/2018
SL	Jardin	Alayna	Elementary Education K - 6 Special Education K - 6	6/1/2013	6/30/2018
SL	Jensen	Kayla	English 7 - 12	7/1/2013	6/30/2018

SL	Jewell	Janet	Elementary Education K - 6	6/1/2013	6/30/2018
SL	Jimenez	Leilani	Elementary Education K - 6	7/1/2013	6/30/2018
SL	Jines	Hannah	Elementary Education K - 6	6/1/2013	6/30/2018
SL	Johansen	Heather	English 7 - 12	6/1/2013	6/30/2018
SL	Johnson	Kari	SPED - Severe/Profound K - 12	7/1/2013	6/30/2018
SL	Johnson	David	Elementary Education K - 6 SPED - Mild/Moderate K - 12	7/1/2013	6/30/2018
SL	Johnson	Zachary	Special Education K - 12	8/1/2013	6/30/2019
SL	Johnson	Kristin	Elementary Education K - 6	7/1/2013	6/30/2018
SL	Johnson	Zanette	English 5 - 9 English 7 - 12	7/1/2013	6/30/2018
SL	Jones	Gregory	Science 7 - 12	6/1/2013	6/30/2018
SL	Jonsdottir	Lorraine	SPED - Mild/Moderate K - 6	7/1/2013	6/30/2018
SL	Jordan	Loraine	Elementary Education K - 6	6/1/2013	6/30/2018
SL	Justus	Monica	SPED - Mild/Moderate K - 12 SPED - Severe/Profound K - 12	7/1/2013	6/30/2018
SL	Kakuda	Jeffrey	Elementary Education K - 6	6/1/2013	6/30/2018
SL	Kalahiki	Sanoe	Health 7 - 12 SPED - Mild/Moderate K - 12	6/1/2013	6/30/2018
SL	Kalawe	Jodi	Elementary Education K - 6	7/1/2013	6/30/2018
SL	Kalliam-Lauer	Michael	Science 7 - 12	6/1/2013	6/30/2018
SL	Kamau	Stephanie	Elementary Education K - 6	6/1/2013	6/30/2018
SL	Kamida	Shaun	Social Studies 7 - 12	6/1/2013	6/30/2018
SL	Kaneshiro	Fawn	School Counselor K - 12	7/1/2013	6/30/2018
SL	Kaneshiro	Stephanie	Elementary Education K - 6	6/1/2013	6/30/2018
SL	Kaneyuki	Kristy	School Counselor K - 12	8/1/2013	6/30/2019
SL	Kapadia	Sarita	Elementary Education K - 6	7/1/2013	6/30/2018
SL	Katakura	Jared	SPED - Deaf/Hard of Hearing K - 12	6/1/2013	6/30/2018
SL	Kaupu-Cabuago	Shaftton	Elementary Education K - 6 Hawaiian Language K - 12 Hawaiian Studies 7 - 12	7/1/2013	6/30/2018
SL	Kawamoto	Marisa	School Counselor K - 12	7/1/2013	6/30/2018
SL	Kawazoe	Branden	School Counselor K - 12	7/1/2013	6/30/2018
SL	Kealialo	Sloane	Elementary Education K - 6	7/1/2013	6/30/2018
SL	Keaunui	Christy	Social Studies 7 - 12	6/1/2013	6/30/2018
SL	Keenan	Melissa	SPED - Mild/Moderate 7 - 12	6/1/2013	6/30/2018
SL	Kerr	Meagan	Elementary Education K - 6	8/1/2013	6/30/2019
SL	Kim	Matthew	Social Studies 7 - 12	6/1/2013	6/30/2018
SL	Kim	Tony	Teaching English to Speakers of Other Languages 7 - 12	7/1/2013	6/30/2018
SL	Kim	Kelly	Physical Education 7 - 12	7/1/2013	6/30/2018

SL	Kim	Denise	English 7 - 12	6/1/2013	6/30/2018
SL	Kise	Blaise	Physical Education K - 12	7/1/2013	6/30/2018
SL	Knudsen	Andrea	SPED - Mild/Moderate K - 12	7/1/2013	6/30/2018
SL	Koenig	Janet	Special Education K-12, Elementary Education K-6	7/1/2013	6/30/2018
SL	Koko	Diana	Elementary Education K - 6	7/1/2013	6/30/2018
SL	Kroll	James	Art K - 12	7/1/2013	6/30/2018
SL	Kumashiro	Shane	School Counselor K - 12	7/1/2013	6/30/2018
SL	Kusao	Ian	Science 7 - 12	7/1/2013	6/30/2018
SL	La	Serena	Elementary Education K - 6	6/1/2013	6/30/2018
SL	Ladao	Jennifer	School Counselor K - 12	7/1/2013	6/30/2018
SL	Lagier	Brittany	Elementary Education K - 6 Special Education PK - 3	7/1/2013	6/30/2018
SL	Landt	Martha	Special Education K - 12	6/1/2013	6/30/2018
SL	Lane	Brianne	Science 7 - 12	7/1/2013	6/30/2018
SL	Langsten	Kristin	CTE-Natural Resources Vocational 7-12 Early Childhood Education PK - 3 Elementary Education K - 6 Science 5 - 9 Special Education K - 12	6/1/2013	6/30/2018
SL	Langston	Bree	Elementary Education K - 6	6/1/2013	6/30/2018
SL	Lanzara	Paula	Special Education 5 - 9	7/1/2013	6/30/2018
SL	Lata	Astrid	Elementary Education K - 6	7/1/2013	6/30/2018
SL	Lau	Candace	English 7 - 12	6/1/2013	6/30/2018
SL	Lebehn	Megan	Elementary Education K - 6	7/1/2013	6/30/2018
SL	Lee	Shelby	School Counselor K - 12	7/1/2013	6/30/2018
SL	Lee	Joana	Elementary Education K - 6	6/1/2013	6/30/2018
SL	Lee	Cora	Elementary Education K - 6	8/1/2013	6/30/2019
	Lee	Alan	Science 6-12	7/1/2013	6/30/2018
SL	Leong	Donald	English 7 - 12	7/1/2013	6/30/2018
SL	Litchfield	Jennifer	Elementary Education K - 6 English 5 - 9 Social Studies 5 - 9	8/1/2013	6/30/2019
SL	Livsey	John	Elementary Education K - 6	7/1/2013	6/30/2018
SL	Lolotai	Shaela	Elementary Education K - 6	7/1/2013	6/30/2018
SL	Lomas	Rebecca	Elementary Education K - 6	6/1/2013	6/30/2018
SL	Lucas	Diane	Elementary Education K - 6	7/1/2013	6/30/2018
SL	Luck	Stephanie	Elementary Education K - 6	6/1/2013	6/30/2018
SL	Luke	Trina	Early Childhood Education PK - 3 Elementary Education K - 6 SPED - Mild/Moderate K - 6 Special Education K - 12	6/1/2013	6/30/2018
SL	Lum	Evan	English 7 - 12	7/1/2013	6/30/2018

SL	Lumabao	Tessie	Science 7 - 12	7/1/2013	6/30/2018
SL	Lytle	Lloyd	Science 7 - 12	6/1/2013	6/30/2018
SL	Mack	Bernadette	Elementary Education K - 6	7/1/2013	6/30/2018
SL	Madio	Eljean	Social Studies 7 - 12	6/1/2013	6/30/2018
SL	Maiava	Whitney	SPED - Mild/Moderate K - 12	6/1/2013	6/30/2018
SL	Majam	Kelly	Physical Education K - 12	6/1/2013	6/30/2018
SL	Manke	Natalie	Elementary Education K - 6	6/1/2013	6/30/2018
SL	Marcos	Anna Marie	Elementary Education K - 6 Special Education K - 6	7/1/2013	6/30/2018
SL	Marek	Heather	Elementary Education K - 6	6/1/2013	6/30/2018
SL	Marinelli	Andrew	English 7 - 12	8/1/2013	6/30/2019
SL	Marte	Ross	Elementary Education K - 6 Special Education K - 6	7/1/2013	6/30/2018
SL	Martinez	Rosalba	Elementary Education K - 6 Teaching English to Speakers of Other Languages K - 6	6/1/2013	6/30/2018
SL	Mastandrea	Frank	Science 5 - 9 Science 7 - 12	8/1/2013	6/30/2019
SL	Mateo	Jovita	English 7 - 12	6/1/2013	6/30/2018
SL	Mathew	Jasmine	Science 7 - 12	8/1/2013	6/30/2019
SL	Matsushima	Keri	Elementary Education K - 6	6/1/2013	6/30/2018
SL	Mccabe	Merekete	School Counselor K - 12	7/1/2013	6/30/2018
SL	McDermott	Claudia	Elementary Education K - 6	8/1/2013	6/30/2019
SL	McElvenny	Ralph	Science 7 - 12	7/1/2013	6/30/2018
SL	McHenry	Sara	Elementary Education K - 6	7/1/2013	6/30/2018
SL	McKeague	Seth	Physical Education K - 12	7/1/2013	6/30/2018
SL	McMillian	Vernon	Science 7 - 12	6/1/2013	6/30/2018
SL	McMillian	Miriam	Elementary Education K - 6	6/1/2013	6/30/2018
SL	Meeks	Amber Lynn	Elementary Education K - 6 Special Education K - 6	8/1/2013	6/30/2019
SL	Mejia	Leticia	Elementary Education K - 6 SPED - Mild/Moderate K - 12	8/1/2013	6/30/2019
SL	Mendoza	Michelle	SPED - Mild/Moderate 7 - 12	6/1/2013	6/30/2018
SL	Messinger	Amelia	Elementary Education K - 6	8/1/2013	6/30/2019
SL	Meyer	Amanda	Elementary Education K - 6	6/1/2013	6/30/2018
SL	Miano	Rich	Physical Education 7 - 12	7/1/2013	6/30/2018
SL	Mickelson	Yuka	Elementary Education K - 6	6/1/2013	6/30/2018
SL	Milanzi	Zuri	Mathematics 7 - 12	7/1/2013	6/30/2018
SL	Mileur	Hilary	Elementary Education K - 6	7/1/2013	6/30/2018
SL	Miller	Marie	CTE-Business 7-12	7/1/2013	6/30/2018

SL	Minay	Devie	Mathematics 7 - 12	6/1/2013	6/30/2018
SL	Minch	Kelly	Social Studies 7 - 12	6/1/2013	6/30/2018
SL	Minehira	David	SPED - Mild/Moderate K - 12	6/1/2013	6/30/2018
SL	Misaka	Lori	English 7 - 12	6/1/2013	6/30/2018
SL	Miura	Megan	Elementary Education K - 6	7/1/2013	6/30/2018
SL	Miyashiro	Markus	Physical Education K - 12	8/1/2013	6/30/2019
SL	Miyata	Fumiaki	Social Studies 7 - 12	7/1/2013	6/30/2018
SL	Mogharabi	Neiloufah	Elementary Education K - 6	7/1/2013	6/30/2018
SL	Moncada	Michelle	SPED - Mild/Moderate K - 12	7/1/2013	6/30/2018
SL	Monette	Kyle	English 7 - 12	6/1/2013	6/30/2018
SL	Moody	Tonya	Early Childhood Education PK - 3 Elementary Education K - 6	7/1/2013	6/30/2018
SL	Moreau	Alyssa	Early Childhood Education PK - 3 Elementary Education K - 6	6/1/2013	6/30/2018
SL	Moreland	Natalie	Elementary Education K - 6	7/1/2013	6/30/2018
SL	Mossman	Kylie	Elementary Education K - 6	7/1/2013	6/30/2018
SL	Muralidharan	Kalyani	English 7 - 12	8/1/2013	6/30/2019
SL	Musial	Elena	School Counselor K - 12	7/1/2013	6/30/2018
SL	Nakagawa	Dawn	Elementary Education K - 6	6/1/2013	6/30/2018
SL	Nakagawa	Chadwick	Hawaiian Language Immersion K - 12	6/1/2013	6/30/2018
SL	Nakai	Kanani	Science 7 - 12	6/1/2013	6/30/2018
SL	Nakamoto	Michael	Japanese 7 - 12	7/1/2013	6/30/2018
SL	Nakamura	Summer	Elementary Education K - 6	8/1/2013	6/30/2019
SL	Nakamura	Kelsie	Elementary Education K - 6	7/1/2013	6/30/2018
SL	Nakata-Nagao	Torie	Elementary Education K - 6	7/1/2013	6/30/2018
SL	Nakatsuka	Mark	Elementary Education K - 6	7/1/2013	6/30/2018
SL	Nakawata	Brittany	English 7 - 12	6/1/2013	6/30/2018
SL	Naone	Sarah	Elementary Education K - 6	6/1/2013	6/30/2018
SL	Narvarte	Margie	Mathematics 7 - 12	8/1/2013	6/30/2019
SL	Navarrete	Diana	Elementary Education K - 6	7/1/2013	6/30/2018
SL	Nazarino-Gaspar	Darlani	School Counselor 7 - 12	7/1/2013	6/30/2018
SL	Neizman	Brittany	Elementary Education K - 6	6/1/2013	6/30/2018
SL	Nerona	Christopher	SPED - Severe/Profound K - 6	6/1/2013	6/30/2018
SL	Newman	Jason	Science 7 - 12	7/1/2013	6/30/2018
SL	Newton	Ivy	Elementary Education K - 6	8/1/2013	6/30/2019
SL	Nguyen	Teo	Elementary Education K - 6	6/1/2013	6/30/2018
SL	Nickel	Jennifer	Elementary Education K - 6	6/1/2013	6/30/2018

SL	Nielson	Jared	School Counselor K - 12	7/1/2013	6/30/2018
SL	Nieto	Samantha	Special Education K - 12	6/1/2013	6/30/2018
SL	Nishikura	Lia	Elementary Education K - 6	7/1/2013	6/30/2018
SL	Noto	Lee	Elementary Education K - 6	7/1/2013	6/30/2018
SL	Nozaki	Gina Nicole	Elementary Education K - 6 Special Education PK - 3	7/1/2013	6/30/2018
SL	Nuzzo	Codi	School Counselor K - 12	6/1/2013	6/30/2018
SL	Ocasio	Christina	Elementary Education K - 6 SPED - Mild/Moderate K - 12	7/1/2013	6/30/2018
SL	Okamoto	April	Early Childhood Education PK - 3 Elementary Education K - 6	6/1/2013	6/30/2018
SL	Oliver	Kelsey	Elementary Education K - 6	7/1/2013	6/30/2018
SL	Olomua	Karen	Elementary Education K - 6	6/1/2013	6/30/2018
SL	Omiya	Christine	Japanese 7 - 12	7/1/2013	6/30/2018
SL	Onaka	Kerry	Elementary Education K - 6	6/1/2013	6/30/2018
SL	O'Neal-Jones	Rita	Elementary Education K - 6	7/1/2013	6/30/2018
SL	Oravitz	Robert	Mathematics 7 - 12	8/1/2013	6/30/2019
SL	O'Reilly	Matthew	Elementary Education K - 6	6/1/2013	6/30/2018
SL	Osborne	Sheila	English 7 - 12	6/1/2013	6/30/2018
SL	Oshiro	Matthew	Elementary Education K - 6	7/1/2013	6/30/2018
SL	Overdeve st	Mark	Physical Education 7 - 12	6/1/2013	6/30/2018
SL	Ozawa	Todd	English 7 - 12	6/1/2013	6/30/2018
SL	Pacific	Joseph	Science 7 - 12	7/1/2013	6/30/2018
SL	Padilla	Danielle	Science 7 - 12	6/1/2013	6/30/2018
SL	Pak	Gunnye	Elementary Education K - 6	7/1/2013	6/30/2018
SL	Palacios	Malia	Elementary Education K - 6	7/1/2013	6/30/2018
SL	Pao	Shawna	Elementary Education K - 6	6/1/2013	6/30/2018
SL	Park	Dohyoun	Elementary Education K - 6	8/1/2013	6/30/2019
SL	Pate-Kahakalau	Eldon	Hawaiian Language 7 - 12 Hawaiian Studies 7 - 12 Social Studies 7 - 12	6/1/2013	6/30/2018
SL	Paulson	Heather	Elementary Education K - 6	7/1/2013	6/30/2018
SL	Perez	Hector	Art K - 12 Spanish 7 - 12	6/1/2013	6/30/2018
SL	Perry	Robyn	Elementary Education K - 6	8/1/2013	6/30/2019
SL	Peters	Ariana	Elementary Education K - 6	7/1/2013	6/30/2018
SL	Petersen	Summer	Elementary Education K - 6	7/1/2013	6/30/2018
SL	Phanphen gdy	Leila	Elementary Education K - 6	6/1/2013	6/30/2018
SL	Phansavat h	Ling	Elementary Education K - 6	6/1/2013	6/30/2018
SL	Phillips	Colette	Elementary Education K - 6	7/1/2013	6/30/2018

SL	Picon	Vanessa	Elementary Education K - 6	7/1/2013	6/30/2018
SL	Pierson	Ted	Science 7 - 12	7/1/2013	6/30/2018
SL	Pourjalali	Michele	SPED - Severe/Profound K - 6	6/1/2013	6/30/2018
SL	Powell	Janet	Elementary Education K - 6	7/1/2013	6/30/2018
SL	Preston	Sheri	SPED - Mild/Moderate K - 12	7/1/2013	6/30/2018
SL	Pruitt	Adam	Elementary Education K - 6	6/1/2013	6/30/2018
SL	Pruitt	Shelby	Mathematics 5 - 9	6/1/2013	6/30/2018
SL	Pugliese	Susan	Elementary Education K - 6	6/1/2013	6/30/2018
SL	Quintana	Gabrielle	Elementary Education K - 6	7/1/2013	6/30/2018
SL	Rainbolt	Summer	Elementary Education K - 6	6/1/2013	6/30/2018
SL	Ramirez	Rochelle	Elementary Education K - 6	7/1/2013	6/30/2018
SL	Ramos	Andrina	Early Childhood Education PK - 3 Elementary Education K - 6	7/1/2013	6/30/2018
SL	Ramos	Pete	SPED - Mild/Moderate K - 6	6/1/2013	6/30/2018
SL	Rapoza	Liana	Elementary Education K - 6	6/1/2013	6/30/2018
SL	Rapoza	Cherisse	Elementary Education K - 6	7/1/2013	6/30/2018
SL	Rayner	Ivan	Special Education K - 12	6/1/2013	6/30/2018
SL	Rector	Jeanne	Elementary Education K - 6 Mathematics 5 - 9 Science 5 - 9 Social Studies 5 - 9	7/1/2013	6/30/2018
SL	Rehn	Kyle	Elementary Education K - 6	7/1/2013	6/30/2018
SL	Reihman	Elizabeth	Elementary Education K - 6	7/1/2013	6/30/2018
SL	Revell	Anna	Science 7 - 12	8/1/2013	6/30/2019
SL	Reyes	Rosemarie	Elementary Education K - 6	6/1/2013	6/30/2018
SL	Rider	Jana	School Counselor K - 12	7/1/2013	6/30/2018
SL	Rippard	James	Elementary Education K - 6 English K - 6 Reading K - 6 Teaching English to Speakers of Other Languages K - 6	6/1/2013	6/30/2018
SL	Rivera	Alfonso	Physics 6 - 12	8/1/2013	6/30/2019
SL	Ro	James	Elementary Education K - 6	6/1/2013	6/30/2018
SL	Robinson	Jacob	Science 7 - 12	7/1/2013	6/30/2018
SL	Robinson	Matthew	School Counselor K - 12	6/1/2013	6/30/2018
SL	Rohrbough	Tara	School Counselor K - 12	7/1/2013	6/30/2018
SL	Roman	Javier	Social Studies 7 - 12	6/1/2013	6/30/2018
SL	Romeril	Kaycee	Social Studies 7 - 12	6/1/2013	6/30/2018
SL	Rosado	Andrew	Mathematics 7 - 12	7/1/2013	6/30/2018
SL	Rosare	Laurelle	Elementary Education K - 6	7/1/2013	6/30/2018
SL	Rougemon	Santana	SPED - Mild/Moderate K - 12	6/1/2013	6/30/2018
SL	Roxburgh	Kathryn	Elementary Education K - 6	6/1/2013	6/30/2018

SL	Rudell	Rebecca	Elementary Education K - 6	6/1/2013	6/30/2018
SL	Ryan	Jan	Mathematics 7 - 12	8/1/2013	6/30/2019
SL	Sabado	Britney	Elementary Education K - 6	7/1/2013	6/30/2018
SL	Sagadraca	Arlyn	Elementary Education K - 6	6/1/2013	6/30/2018
SL	Sakaki	Malia	Early Childhood Education PK - 3 Elementary Education K - 6	7/1/2013	6/30/2018
SL	Salvador	Clinton	CTE-Arts and Communication 7-12	8/1/2013	6/30/2019
SL	Samolinski	Ivy	Elementary Education K - 6	7/1/2013	6/30/2018
SL	Sanborn	Kristen	Elementary Education K - 6 SPED - Mild/Moderate K - 12	7/1/2013	6/30/2018
SL	Sanchez	Luis	Mathematics 7 - 12	7/1/2013	6/30/2018
SL	Sanders	Darby	Elementary Education K - 6	7/1/2013	6/30/2018
SL	Sanderson	Brandi	English 7 - 12	7/1/2013	6/30/2018
SL	Santini Diaz	Sheila	Science 7 - 12	6/1/2013	6/30/2018
SL	Santos	Dusty	Elementary Education K - 6 SPED - Deaf/Hard of Hearing K - 12	6/1/2013	6/30/2018
SL	Saole	Rustin	SPED - Mild/Moderate 7 - 12	6/1/2013	6/30/2018
SL	Sarver	Lyn	Physical Education K - 12 Science 7 - 12	6/1/2013	6/30/2018
SL	Savino	Deborah	Mathematics 5 - 9	7/1/2013	6/30/2018
SL	Schiller	Elizabeth	Elementary Education K - 6	7/1/2013	6/30/2018
SL	Scott	Elizabeth	Elementary Education K - 6	6/1/2013	6/30/2018
SL	Sears	Kirsten	Spanish K - 12	7/1/2013	6/30/2018
SL	Sen	Cherisse	Mathematics 7 - 12	7/1/2013	6/30/2018
SL	Serrano	Juan	Social Studies 7 - 12	7/1/2013	6/30/2018
SL	Shepherd	Maria	Teaching English to Speakers of Other Languages K - 12 Teaching English to Speakers of Other Languages PK - 3	8/1/2013	6/30/2019
SL	Sherlock	Stephanie	Elementary Education K - 6	7/1/2013	6/30/2018
SL	Shifferly	Jessica	School Counselor K - 12	7/1/2013	6/30/2018
SL	Shima	Melissa	Mathematics 7 - 12	6/1/2013	6/30/2018
SL	Shirk	Nicole	English 7 - 12	7/1/2013	6/30/2018
SL	Shoji	Casey	Social Studies 7 - 12	7/1/2013	6/30/2018
SL	Siegel	Aubree	Elementary Education K - 6 Special Education K - 6	6/1/2013	6/30/2018
SL	Silva	Genesis	English 7 - 12	7/1/2013	6/30/2018
SL	Simoy	Christian	Social Studies 7 - 12	7/1/2013	6/30/2018
SL	Simpson	Patricia	Elementary Education K - 6	8/1/2013	6/30/2019
SL	Sjostrand	Maile	Elementary Education K - 6	6/1/2013	6/30/2018
SL	Sleeper	Jessica	Early Childhood Education PK - 3	6/1/2013	6/30/2018

			Elementary Education K - 6		
SL	Smith	Thomas	Elementary Education K - 6 Physical Education K - 12 SPED - Mild/Moderate K - 12 Social Studies 7 - 12	8/1/2013	6/30/2019
SL	Smith	Richard	Social Studies 7 - 12 Special Education K - 12	7/1/2013	6/30/2018
SL	Smith	Heather	Health K - 12 SPED - Mild/Moderate K - 12 Science 7 - 12	8/1/2013	6/30/2019
SL	Snider	Katherine	Elementary Education K - 6	8/1/2013	6/30/2019
SL	Soderman	Jenna	Elementary Education K - 6	6/1/2013	6/30/2018
SL	Souza	Sanoe	Elementary Education K - 6	6/1/2013	6/30/2018
SL	Souza	Keri	Early Childhood Education PK - 3 Elementary Education K - 6	6/1/2013	6/30/2018
SL	Sparkes	Solethea	Reading K - 12 Social Studies 7 - 12 Special Education K - 12	8/1/2013	6/30/2019
SL	Sparkman	Rachelle	Early Childhood Education PK - 3 Elementary Education K - 6	6/1/2013	6/30/2018
SL	Staples	Cindy	Elementary Education K - 6	6/1/2013	6/30/2018
SL	Steele	Glenda	Elementary Education K - 6 School Librarian K - 12	8/1/2013	6/30/2019
SL	Stoner	Rebecca	Mathematics 7 - 12	7/1/2013	6/30/2018
SL	Stringer	Amy	Elementary Education K - 6	6/1/2013	6/30/2018
SL	Stroud	Virginia	Early Childhood Education PK - 3 Elementary Education K - 6 Social Studies 5 - 9	7/1/2013	6/30/2018
SL	Strutton	Danielle	Elementary Education K - 6	7/1/2013	6/30/2018
SL	Sugimoto	Whitney	Elementary Education K - 6	6/1/2013	6/30/2018
SL	Sussman	Kierstan	Elementary Education K - 6	6/1/2013	6/30/2018
SL	Swan	Mahri	School Counselor K - 12	7/1/2013	6/30/2018
SL	Swank	Phoebe	CTE-Business 7-12	8/1/2013	6/30/2019
SL	Swanson	Tiffany	Early Childhood Education PK - 3 Elementary Education K - 6	6/1/2013	6/30/2018
SL	Sweany	Laci	Elementary Education K - 6	7/1/2013	6/30/2018
SL	Takahashi	Jon	Elementary Education K - 6 Special Education K - 6	6/1/2013	6/30/2018
SL	Takahashi	Keiko	Elementary Education K - 6 Special Education K - 6	6/1/2013	6/30/2018
SL	Takamori	Kellie	Elementary Education K - 6 Mathematics 5 - 9 Mathematics 7 - 12	8/1/2013	6/30/2019
SL	Takesono	Janelle	SPED - Mild/Moderate K - 12	6/1/2013	6/30/2018
SL	Taketa	Michele	Elementary Education K - 6	8/1/2013	6/30/2019
SL	Takiguchi	Taryn	Elementary Education K - 6	7/1/2013	6/30/2018

SL	Tanaka	Mark	SPED - Mild/Moderate K - 12	7/1/2013	6/30/2018
SL	Taniguchi	Julie-Ann	School Counselor K - 12	7/1/2013	6/30/2018
SL	Tanno	Cassie	Elementary Education K - 6	7/1/2013	6/30/2018
SL	Tanouye	Kahelelani	Elementary Education K - 6 Special Education PK - 3	7/1/2013	6/30/2018
SL	Tapia-Grassi	John	Mathematics 7 - 12	8/1/2013	6/30/2019
SL	Tashiro	Justine	Elementary Education K - 6 Special Education PK - 3	7/1/2013	6/30/2018
SL	Taylor	Vincent	Social Studies 7 - 12	7/1/2013	6/30/2018
SL	Terai	Guysen	School Counselor K - 12	7/1/2013	6/30/2018
SL	Terry	Megan	Elementary Education K - 6	6/1/2013	6/30/2018
SL	Thaxton	Julene	Elementary Education K - 6	6/1/2013	6/30/2018
SL	Thornton	Ashley	Elementary Education K - 6	7/1/2013	6/30/2018
SL	Towner	Caitlin	Elementary Education K - 6 Special Education K - 6	6/1/2013	6/30/2018
SL	Toy	Leslie	Science 7 - 12	7/1/2013	6/30/2018
SL	Travers	Roberta	English 7 - 12	7/1/2013	6/30/2018
SL	Tueller	Beth	Elementary Education K - 6	6/1/2013	6/30/2018
SL	Usami	Lauren	Elementary Education K - 6 Special Education K - 6	7/1/2013	6/30/2018
SL	Valentine	Vikki	SPED - Mild/Moderate K - 12	6/1/2013	6/30/2018
SL	Varholak Madani	Laurie	Elementary Education K - 6	7/1/2013	6/30/2018
SL	Vassilopoulos	Mary	Elementary Education K - 6 Special Education K - 12	6/1/2013	6/30/2018
SL	Vaughn	Sundance	Science 7 - 12	6/1/2013	6/30/2018
SL	Vellalos	Bree'Ana	Elementary Education K - 6	6/1/2013	6/30/2018
SL	Venancio	Maria	Elementary Education K - 6	6/1/2013	6/30/2018
SL	Videtti	Eileen	Elementary Education K - 6	8/1/2013	6/30/2019
SL	Villanueva	Kyrra	Early Childhood Education PK - 3 Elementary Education K - 6	6/1/2013	6/30/2018
	Villere	Barbara	Elementary Education K-6	6/1/2013	6/30/2018
SL	Vitale	Ekekel	Elementary Education K - 6	6/1/2013	6/30/2018
SL	Wagner	Rebecca	Elementary Education K - 6	8/1/2013	6/30/2019
SL	Wang	Li Yu	Chinese 7 - 12	6/1/2013	6/30/2018
SL	Waters	Meghan	Special Education K - 12	7/1/2013	6/30/2018
SL	Watts	Jerry	Elementary Education K - 6 English 5 - 9	7/1/2013	6/30/2018
SL	Weidenbach	Mariah	SPED - Mild/Moderate K - 6	6/1/2013	6/30/2018
SL	Weldon	Joseph	Reading Specialist K - 12	8/1/2013	6/30/2019
SL	Wellbaum	Shannon	SPED - Mild/Moderate K - 12	6/1/2013	6/30/2018

SL	White	Heather	Early Childhood Education PK - 3	7/1/2013	6/30/2018
SL	Wieder	Sarah	SPED - Mild/Moderate K - 12	8/1/2013	6/30/2019
SL	Wilker	Athena	English 5 - 9 SPED - Mild/Moderate K - 12	6/1/2013	6/30/2018
SL	Williams	Mathieu	Elementary Education K - 6	7/1/2013	6/30/2018
SL	Wilson	Celina	Elementary Education K - 6	6/1/2013	6/30/2018
SL	Wilson	Janelle	School Counselor K - 12	7/1/2013	6/30/2018
SL	Witcher	Kristin	Social Studies 7 - 12	7/1/2013	6/30/2018
SL	Wittig	Laura	Elementary Education K - 6	6/1/2013	6/30/2018
SL	Wojahn	Lesia	English 7 - 12	7/1/2013	6/30/2018
SL	Wong	Sherisse	Early Childhood Education PK - 3 Elementary Education K - 6	7/1/2013	6/30/2018
SL	Yamaguchi	Rhesa	Elementary Education K - 6	6/1/2013	6/30/2018
SL	Yamane	Kelsey	Elementary Education K - 6	6/1/2013	6/30/2018
SL	Yehling	Becky	Special Education K - 12 Special Education PK - 3	8/1/2013	6/30/2019
SL	Yoneshige	Patti	SPED - Mild/Moderate K - 12	6/1/2013	6/30/2018
SL	Yoshida	Elbert	Science 7 - 12	6/1/2013	6/30/2018
SL	Zanini	Ebyan	English 7 - 12	6/1/2013	6/30/2018
			Add A Field		
Type	Last Name	First Name	Teaching Fields	Effective Date	Expiration_date
AAF	Agapay	Agnes	Elementary Education K-6	7/1/2013	6/30/2018
AAF	Amparo	Rachelle	Drama/Theatre Arts 7-12	5/1/2013	6/30/2018
AAF	Araki	Tricia	School Counselor K-12	7/1/2013	6/30/2016
AAF	Asuncion	Romeo	Health 7-12	5/1/2013	8/31/2015
AAF	Blake	Alexianne	TESOL K-6	7/1/2013	6/30/2017
AAF	Bundtzen	Meghan	Spanish K-6	5/1/2013	6/30/2018
AAF	Campbell	Diane	Elementary Education K-6, SPED K-12	7/1/2013	6/30/2018
AAF	Dalde	Anastacio	Mathematics 7-12	4/1/2013	6/30/2017
AAF	Dunn	Keoni	English 5-9	6/1/2013	6/30/2017
AAF	Dzugan	Rose Marie	Special Education K-6	5/1/2013	6/30/2018
AAF	Gajelonia	Gizelle	Special Education K-6	7/1/2013	6/30/2018
AAF	Grant	Stefanie	TESOL K-6	6/1/2013	6/30/2018
AAF	Hagen	Heidi	Elementary Education K-6 and Social Studies 5-9	5/1/2013	6/30/2018
AAF	Healy	Pamela	Social Studies 5-9	7/1/2013	9/14/2015
AAF	Ida	Michael	Physics 6-12	7/1/2013	6/30/2023
AAF	Ikehara	Mykenna	Special Education K-6	8/1/2013	6/30/2018
AAF	Jarrell	Troy	Elementary Education K-6	6/1/2013	6/30/2018

AAF	Krengel	Jeffrey	Mathematics 5-9, English 5-9	7/1/2013	5/31/2015
AAF	Lavigne	Timothy	Mathematics 7-12	5/1/2013	6/30/2016
AAF	Lorenzo	Cori-Ann	Mathematics 5-9	6/1/2013	6/30/2017
AAF	Maile	Becka	Elementary Education K-6	4/1/2013	6/15/2014
AAF	Manning	John	SPED - Mild/Moderate 7 - 12	6/1/2012	6/30/2017
AAF	McGill	Ryan	Special Education K-6	5/1/2013	6/30/2017
AAF	Mexico-Frazier	Scott	Special Education K-12	8/1/2013	6/30/2023
AAF	Mendonca	Rose	School Counselor 7-12	4/1/2013	6/30/2017
AAF	Miguel	Tiara	CTE-Arts and Communication 7-12	6/1/2013	6/30/2017
AAF	Moniz	Geraldine	SPED K-6	7/1/2013	6/30/2017
AAF	Montoya	Melissa	Science 7-12	6/1/2013	6/30/2017
AAF	Nakagawa	Elaine	Mathematics 7-12	6/1/2013	6/30/2017
AAF	Nakahashi	Kimberly	SPED Severe/Profound K-6	7/1/2013	6/30/2017
AAF	Nakaoka	Noreen	Special Education K - 6 Special Education PK - 3	7/1/2012	6/30/2017
AAF	Olayon	Jenne	English 7-12	7/1/2013	6/11/2014
AAF	O'Shaughnessy	Brigitte	Spanish 7-12	5/1/2013	12/21/2013
AAF	Pittman	Nickey	Mathematics 5-9	7/1/2013	6/30/2016
AAF	Russell	Wendi	Art 7-12	7/1/2013	6/30/2017
AAF	Sager	Jonathan	English 7-12	6/1/2013	6/30/2018
AAF	Salas-Selem	Ashlie	Special Education - Mild/Moderate K-12	6/1/2013	6/30/2016
AAF	Sampson	Krysta	Mathematics 5-9	7/1/2013	6/30/2017
AAF	Sarver	Lyn	Physical Education K - 12 Science 7 - 12	6/1/2013	6/30/2018
AAF	Savard	Melany	Special Education K-6	4/1/2013	11/16/2014
AAF	Seward	Malia	Mathematics 5-9, SPED 5-9	6/1/2013	6/30/2016
AAF	Sheehan	Mei-Lan	English 5-9	5/1/2013	4/23/2014
AAF	Sherman	Matthew	CTE Businness 7-12	6/1/2013	6/30/2018
AAF	Silver	Bryan	CTE Industrial and Engineering Technology 7-12	5/1/2013	6/30/2017
AAF	Swedman	Baird	Mathematics 7-12, English 7-12	8/1/2013	6/30/2017
AAF	Tateoka	Mark	Social Studies 7-12	5/1/2013	7/31/2015
AAF	Tillery	Dawn	School Counselor 7-12	8/1/2013	6/30/2018
AAF	Torricer	Jane	Science 5-9	5/1/2013	6/30/2018

AAF	Toynton	Richard	English 5-9	4/1/2013	5/31/2015
AAF	Tuifagu	Adam	Mathematics 5-9	5/1/2013	6/30/2018
AAF	Venabel	Agullana	Health 7-12	4/1/2013	6/30/2016
AAF	Watts	Joseph	Special Education 7-12	5/1/2013	6/30/2018
AAF	Wilker	Athena	Mathematics 5-9	7/1/2013	6/30/2018
AAF	Wong	Whitney	Elementary Education K-6	5/1/2013	6/30/2016
AAF	Yossa	Caroline	Mathematics 5-9, Special Education K-9	7/1/2013	6/30/2017
AAF	Young	Michelle	TESOL K-12	7/1/2013	6/30/2018
			Provisional License		
Type	Last Name	First Name	Teaching Fields	Effective Date	Expiration_date
PL	Graves	Guthrie	Elementary Education K - 6	7/1/2013	6/30/2014
PL	Maharaj	Krishanand	Mathematics 7 - 12	7/1/2013	6/30/2014
PL	Powers Pye	Keri	School Counselor K - 12	6/1/2013	5/31/2014
PL	Ryals	Sarah	Early Childhood Education PK - 3	6/1/2013	6/30/2014
PL	Williams	Molly	Mathematics 7 - 12	8/1/2013	7/31/2014
			Special Permit		
Type	Last Name	First Name	Teaching Fields	Effective Date	Expiration_date
SP	Beltran	Randy	Career and Technical Education	8/1/2013	7/31/2014
SP	Patcho	Robert	CTE-Industrial and Engineering Technology 7-12	7/1/2013	6/30/2014
SP	Ramos	Jay	CTE-Industrial and Engineering Technology 7-12	7/1/2013	6/30/2014

TITLE: Evaluation of the Hawaii Teacher Standards Board Executive Director

The Hawaii Teacher Standards Board approves the attached evaluation of the HTSB Executive Director for the year ending June 30, 2013.

The HTSB approves the following goals for the Executive Director for the year ending June 30, 2014:

1. Guide deployments to Hawaii Information Consortium online system, including integrating all payment methods into the system:
 - a. Payments made directly to HTSB office using check, money order or cashier's check;
 - b. Payments made by Department of Education for license renewals of employees with satisfactory evaluation in previous year.

2. Develop informational materials for Hawaii Department of Education and Charter School principals and regional personnel officers to guide their work with applicants and licensees. As their schedules allow, meet with principals in each of the districts at least once in the year at their regularly scheduled meetings.

The Board shall use the following evaluation instrument: The State of Hawaii Office of Human Resources Development EMCP Performance Evaluation System for subsequent evaluations;

The evaluation timeline is as follows:

- January 2014:
 - Mid-term evaluation of goals
- June 2014:
 - Administer EMCP 2014;
 - Set goals for EMCP 2015;
- Thereafter:
 - A mid-term evaluation of goals will be held in January of each year;
 - The EMCP will be administered in July of each year;
 - Goals for the following year will be set at the July EMCP evaluation.

Submitted by: Terry Lynn Holck

Referred to:

New Business Item 13-04

Introduced 8/30/13

Approved 8/30/13

TITLE: State Approval of Teacher Education (SATE) Approval for Kaho'iwai Education Preparation Provider (EPP) Unit and Secondary Program

The Hawaii Teacher Standards Board (HTSB) grants Full SATE Approval to Kaho'iwai EPP unit and secondary program effective August 30, 2013 – June 24, 2018. The unit must submit an annual report to the HTSB and obtain continuing national accreditation from an accrediting body recognized by the US Department of Education prior to June 24, 2018.

This approval is based on the Teacher Education Accreditation Council (TEAC) on-site review team and Accreditation Committee Board of Director's recommendation:

TEAC Accreditation Decision:

The Post-baccalaureate Teacher Certification Program submitted by Kaho'iwai is granted Initial Accreditation (5 years) with one weakness and no stipulations. The Kaho'iwai Post-baccalaureate Teacher Certification Program's status is effective between June 24, 2013 and June 24, 2018.

Weakness in *Quality Principle 2.3*:

The design described in the *Inquiry Brief Proposal* has not been operationalized. Justification for a weakness cited in *Quality Principle 2.3*: Although the original case analysis did not include a weakness, the panel members discussed the fact that the program – while building on a previous one – has not yet been implemented and that, for reasons of consistency across reports, the fact that the teacher preparation program design has not yet been operationalized should simply be noted. The panel was convinced that the institution has been thorough and thoughtful in planning the program and the data collection for accreditation and program approval.

Submitted by: Terry Lynn Holck

Committee: Teacher Education Committee

New Business Item 13-05

Introduced 08/30/13

Approved 08/30/13

TITLE: Approval of Mobile App for HTSB License Lookup

The Hawaii Teacher Standards Board approves the attached Statement of Work allowing Hawaii Information Consortium to develop and deploy a mobile app to allow public lookup of licenses via mobile devices. This app will be developed by HIC at no cost to the HTSB.

Submitted by: Terry Lynn Holck

Referred to: